

# 4' CELLULAR ANTENNA



**9 dB GAIN DUAL BAND**

**500 GOLD | 800 SERIES | 900 SERIES**

Digital Antenna's dual band cellular antennas improve signals on cellular (824-894 MHz) and PCS (1850-1990 MHz) bands. They are omni-directional, transmitting and receiving signals from all directions, and provide you with 10 times the signal of a cell phone used by itself. With a powerful 9dB gain and professional marine grade construction, these cell antennas deliver high performance that will last for years. Available in lengths from 18" to 8', each antenna is designed for easy connection to your cell phone or amplifier. Choose the length and mounting options best suited for your application.

## 500 GOLD Series: 563-CW | 563-CB

**Mount:** Standard 1"-14 threaded base.

**Connector:** GOLD factory-attached mini-UHF female with double mini-UHF male adapter.

**Cable:** 20' exclusive low-loss, tinned braid, foil shielded, UV stable RG-8X marine cable.

## 800 Series: 883-CW | 883-CB

**Mount:** Stainless steel double female ferrule for mounting 1"-14 threaded base.

**Connector:** Highest quality Type N female.

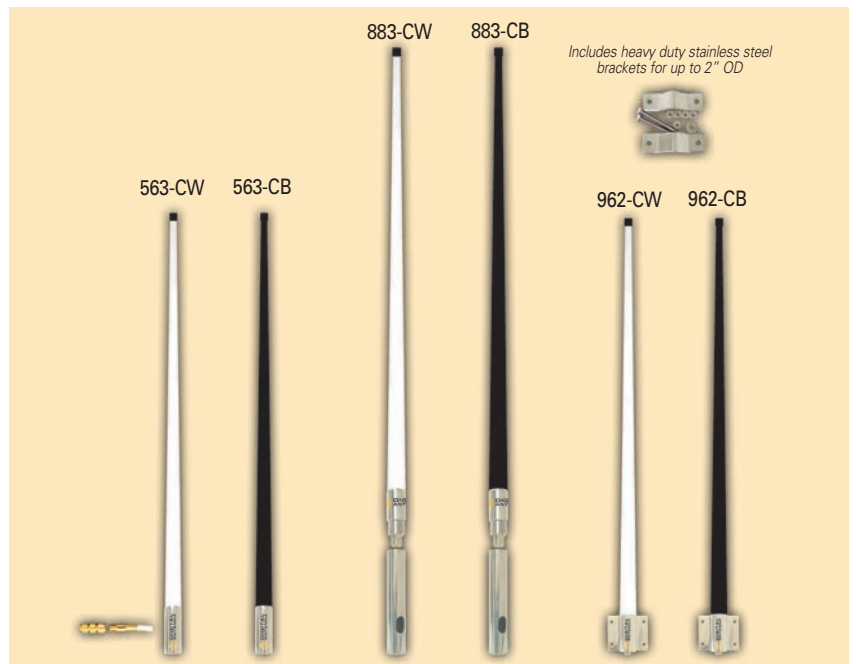
**Cable:** Not included – use Digital Antenna's PowerMax™ Cable.

## 900 Series: 962-CW | 962-CB

**Mount:** Stainless steel brackets included for bulkhead, flat or mast/tube mounting.

**Connector:** Highest quality Type N female.

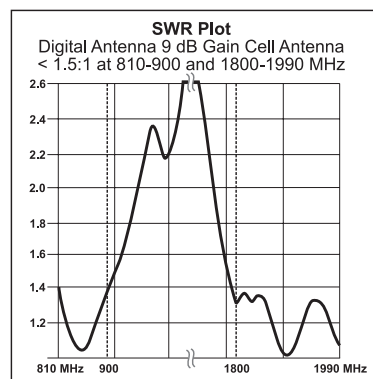
**Cable:** Not included – use Digital Antenna's PowerMax™ Cable.



## Product Technical Specifications

Models # 563-CW | 563-CB, # 883-CW | 883-CB, # 962-CW | 962-CB

<b>Radiation Pattern</b>	Omni-Directional
<b>Gain</b>	9 dBi
<b>Bandwidth VSWR</b>	< 1.5:1 = 810-900 and 1800-1990 MHz
<b>Impedance</b>	50 ohms
<b>Max Input Power</b>	250 watts
<b>Dimensions</b>	4' l x 1" tapered OD
<b>Exterior Finish</b>	White, UV stable poly-urethane coating
<b>Ferrule</b>	316 Stainless Steel
<b>Wind Rating</b>	115 mph
<b>Weight</b>	500 Series 1.5 lbs   800 Series 1.0 lbs   900 Series 1.7 lbs
<b>Cable</b>	500 Series 20" exclusive RG-8X
<b>RF Connector</b>	500 Series - Mini-UHF female with double male adapter 800 & 900 Series - Type N female
<b>Installation</b>	500 Series - 1"-14 female threads 800 Series - 1"-14 threaded double female ferrule 900 Series - Stainless steel brackets for flat or mast mounting



Digital Antenna, Inc.  
www.digitalantenna.com

5325 NW 108th Avenue  
Sunrise, FL 33351

t 954.747.7022  
f 954.747.7088